

# *Maine Academy of Family Physicians Foundation*

*PO Box 424*

*Hartland, ME 04943*

*Telephone: 207-938-5005*

*Fax: 207-938-5931*

## Medical Student Externship

### Who Is Eligible?

4<sup>th</sup> year medical students with an expressed interest in Primary Care and desiring the experience of a Rural Externship with exposure to rural care in a developing country (Dominican Republic).

### Description of Externship:

This externship is intended to expose the medical student to Family Medicine in two different settings- in Rural Maine and in the rural areas of the Dominican Republic. Both weeks are under the supervision of a Family Physician preceptor, with the U.S. portion of the externship in a rural community in Maine. The Dominican Republic portion of the externship is sponsored in the U.S. by the Maine LaRomana Missions Team through the American Baptist Conference\* (see note) in cooperation with the Good Samaritan Hospital in LaRomana, Dominican Republic. (see website: <http://www.laromana.org/index.html>) The LaRomana "project" is part of the largest humanitarian relief effort in the Western hemisphere. In 2007, medical teams provided care to approximately 15,000 patients in Batey (village) clinics in the LaRomana region.

### When?

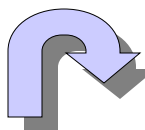
- Week 1 (in Maine) to begin January 17, 2009
- Week 2 & 3 – in Dominican Republic January 24 -February 2, 2009
- Week 4 (in Maine) February 2-14, 2009

### Duration:

- 4 weeks under the direct supervision of a Family Physician
- Weeks 1 & 4 with the Family Physician in a Rural Maine community
- Weeks 2 & 3 in the Dominican Republic seeing patients daily in Batey (village) clinics. The population served is primarily Haitians who live in Bateys (villages) and work in the sugar cane fields

### Medical Student Requirements/Responsibilities:

- Student will be required to sign a waiver of responsibility
- Must provide proof of Passport valid through July 2009
- Must be physically able to travel via airplane to/from the Dominican Republic, as well as on daily 1-2 hour school bus trips over rough, gravel roads



**Application Deadline: October 15, 2008**

(name of extern selected announced November 1, 2008)

# *Maine Academy of Family Physicians Foundation*

*PO Box 424*

*Hartland, ME 04943*

*Telephone: 207-938-5005*

*Fax: 207-938-5931*

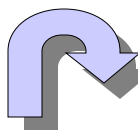
## Medical Student Requirements/Responsibilities continued:

- Responsible for obtaining any required immunizations and anti-malarial medications (recommended)
- Spending money for any additional side trips, meals, etc. not expressly indicated as covered
- Upon completion of externship, student will write an article outlining their externship experience for the MAFP newsletter, The Pine Tree FP, as well as give a 20-30 minute presentation at the MAFP Annual Family Medicine Update (annual CME meeting) April 30 – May 1, 2009 in Bar Harbor, Maine

## MAFP Foundation Provides:

- Stipend, \$ 600 direct to student (less monies to cover lodging expenses for weeks 1 & 4, and travel other than during Dominican portion of externship paid by the MAFP/F). This stipend is intended to be used for incidental expenses such as (but not limited to) immunizations, anti-malarial meds for international portion
- \$ 1400 direct to the Maine LaRomana Mission Team (covers all transportation, housing, and 3 meals/day for weeks 2 & 3 trip to the Dominican Republic)
- Family Physician preceptor for entire 4 weeks

\*Please Note: Although the Dominican Republic portion of this externship is sponsored by the American Baptist Conference, the student will, in no way, be required to attend and/or participate in any religious activities (ie: prayer, church services, etc.) during the trip. These activities are purely optional.



**Application Deadline: October 15, 2008**

(name of extern selected announced November 1, 2008)